

## Product Description

GB-706W is a robust Wireless Glass Break Detector which has alarm, tamper and low battery signal outputs.

## Setup Instructions

### Test Mode:

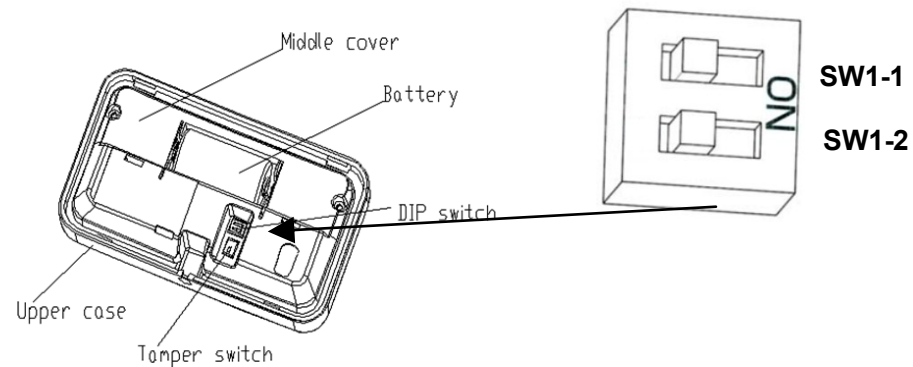
Remove the insulation tabs from the battery holder, test mode is activated for 5 Minutes upon power on. LED blinks every second when detector is in test mode. Detector will exit test mode after 5 minutes. Output alarm 100mS high level pulse.

### Sensitivity (Range):

Table 1 below for detail sensitivity setting.

SENSITIVITY	DETECTION RANGE	SW1-1	SW1-2
MAX	6 M	OFF	OFF
MEDIUM	4M	OFF	ON
LOW	2.5M	ON	OFF
LOWEST	1.5M	ON	ON

( Table 1 )



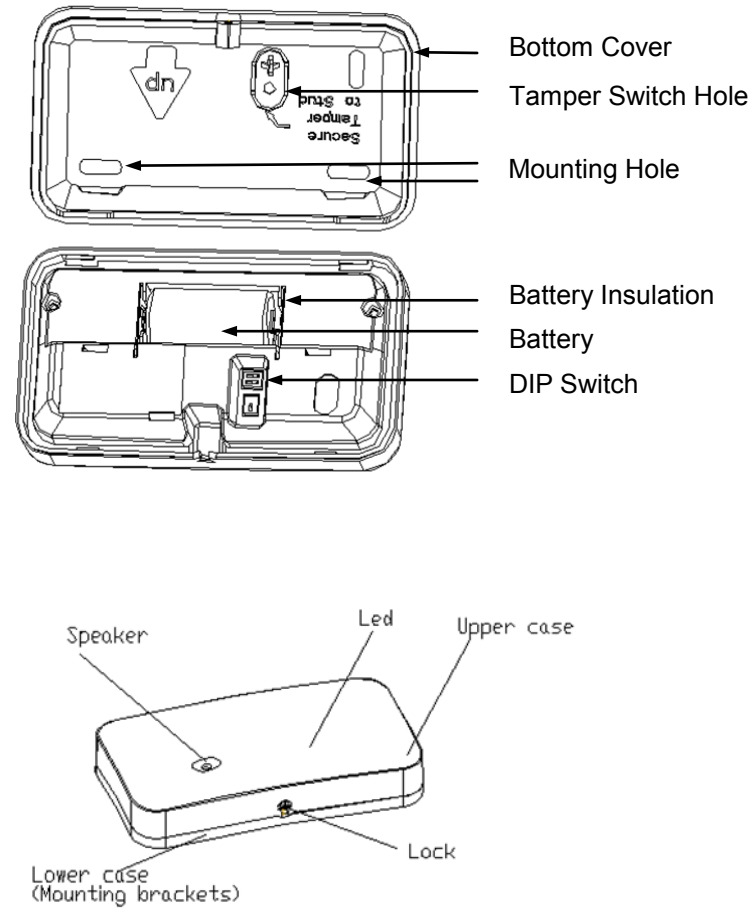
### LED Indicators:

Table 2 below summarizes the LED messages.

CONDITION	RED LED
Power Up	Flash 3 times
Test Mode, event detected	Flash once per second (slow flashing)
Test Mode, alarm	Flash 2 seconds (quick flashing)
Working, Alarm	ON 5 seconds
Low Battery	Flash once every 30 seconds

( Table 2 )

## Glass Break Detector Internal Parts



## Mounting Height

It is recommended that the unit be mounted at a height not less than 2 meters. (See fig. 1-6.)

When the unit is installed in vicinity with active ultrasonic sensors, the distance between units must be at least 1 meter. All areas of glass to be monitored shall be within a clear line of sight of the unit. Distance from the unit to the most remote point of monitored glass shall not exceed 6 meters.

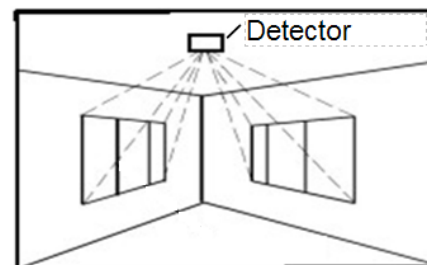


Fig.1 Ceiling mount for windows on adjacent walls

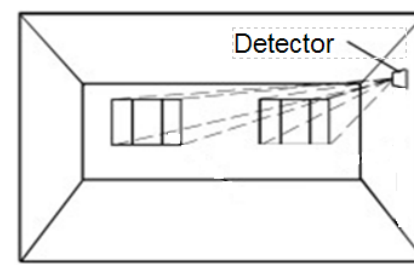


Fig.2 Wall mount for windows on same wall

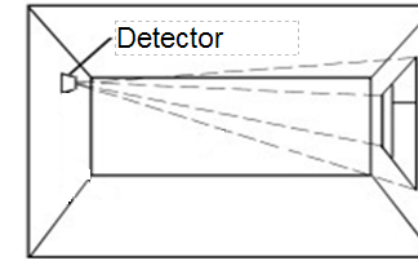


Fig.3 Wall mount for windows on opposite wall

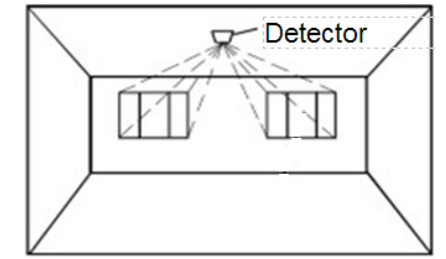


Fig.4 Ceiling mount for windows on same wall

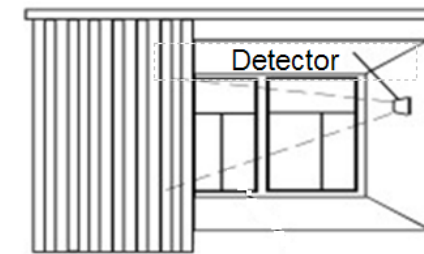


Fig.5 Detector mount between window and curtains (louvers)

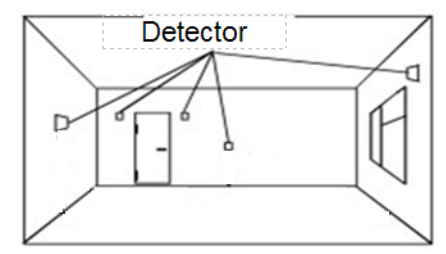


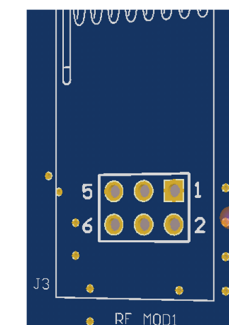
Fig.6 Places not recommended for mounting of the detector

## Specifications

Power: 3V Battery (CR-123A)  
 Detection Range: Maximum range is 6m, No minimum range.  
 RF Frequency: by customer  
 Operating Temperature: -10°C ~ 50°C  
 Dimensions: 106 x 60 x 25.5mm

### J3 Connector:

Pin1: GND  
 Pin2: Alarm output  
 Standby: low-level output, Active: High-level output for 5 seconds.  
 Pin3: If battery voltage drops below 2.7V, LED will flash every 30 seconds.  
 Pin4: 3V output when tamper is activated. 0V output when tamper is not activated.  
 Pin5: Input 3VDC  
 Pin6: NC



Pin1: GND (Black)  
 Pin2: Alarm (Gray)  
 Pin3: Low Battery (Purple)  
 Pin4: Tamper (Blue)  
 Pin5: 3VDC (White)  
 Pin6: NC